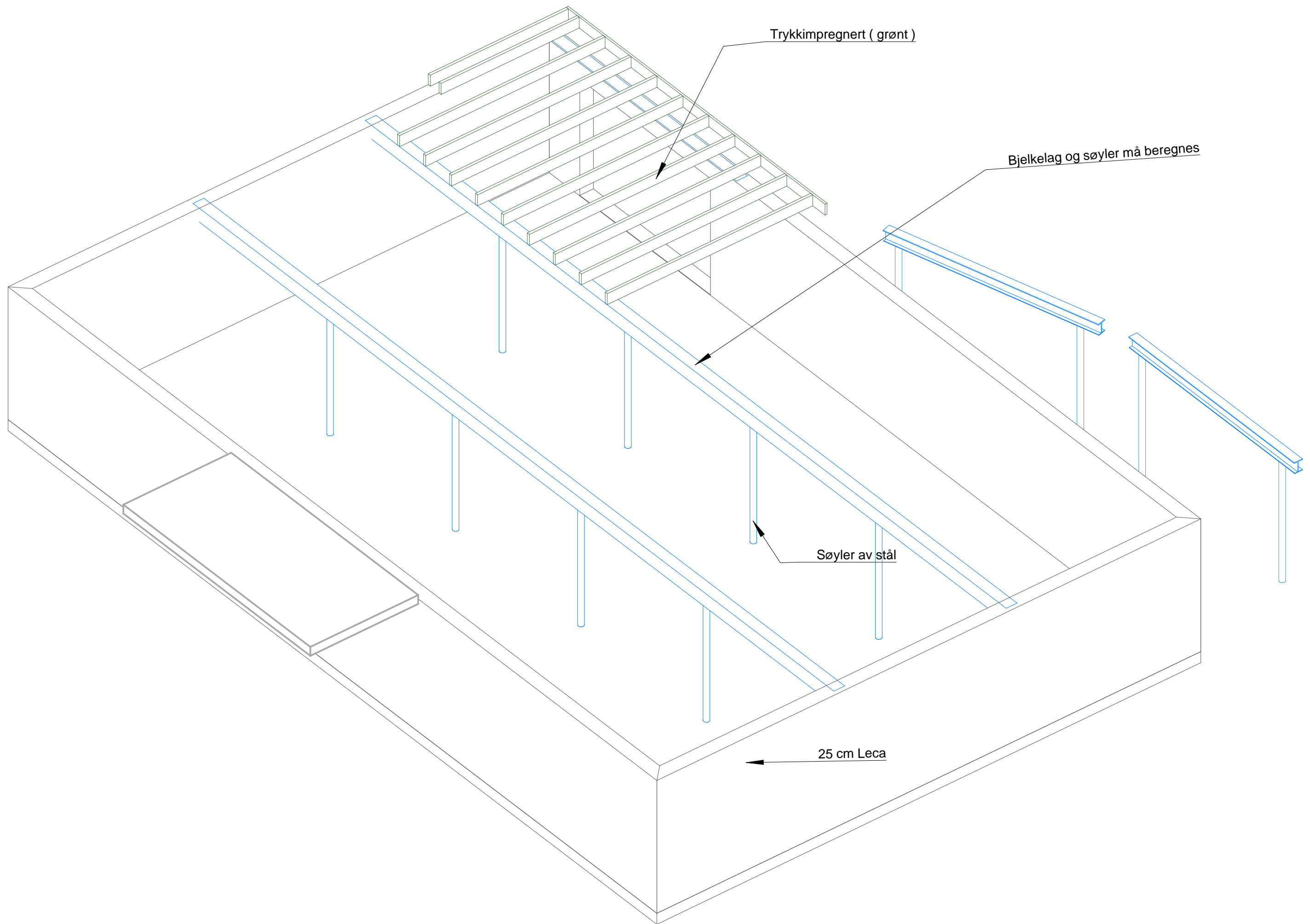
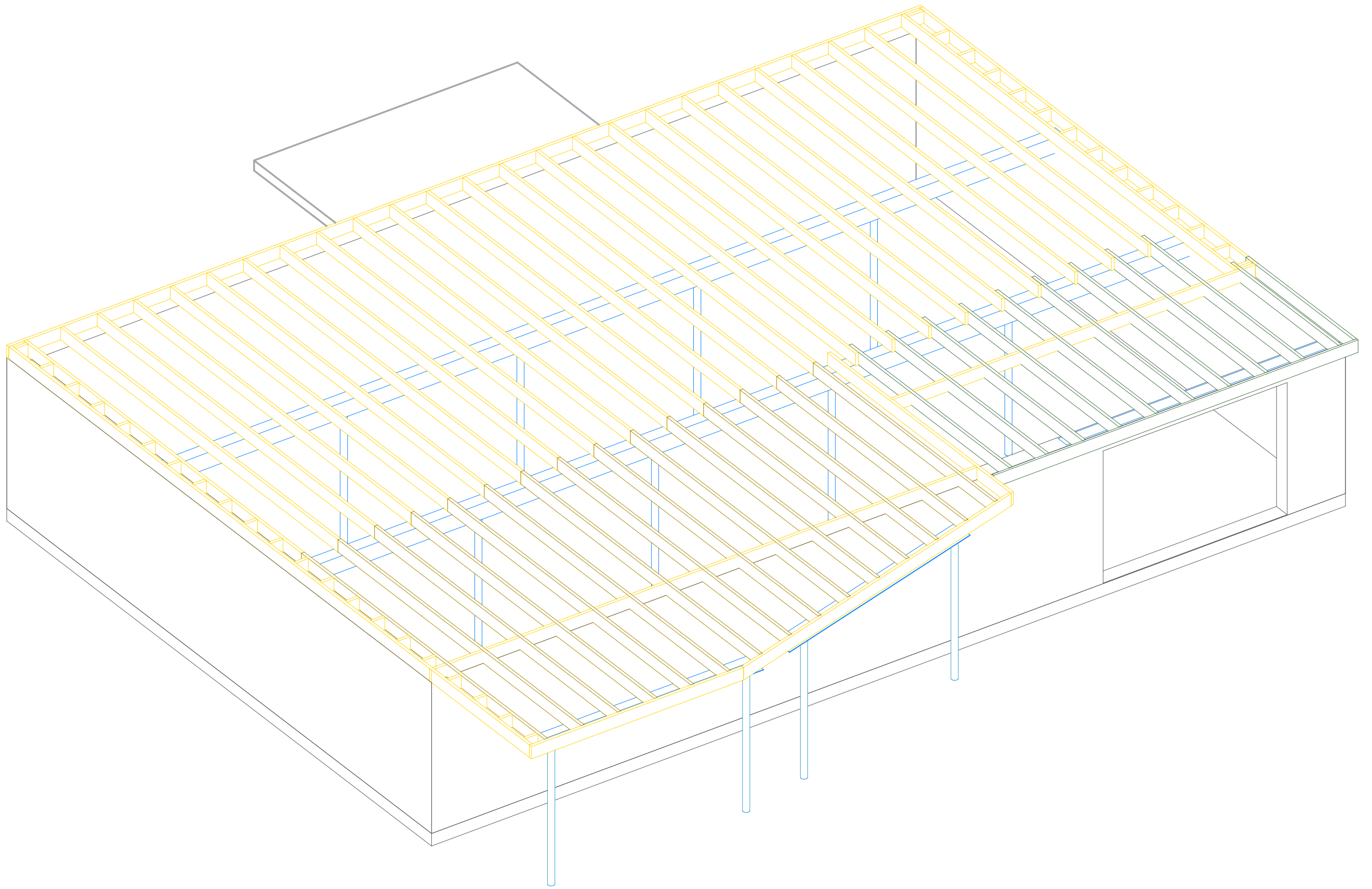
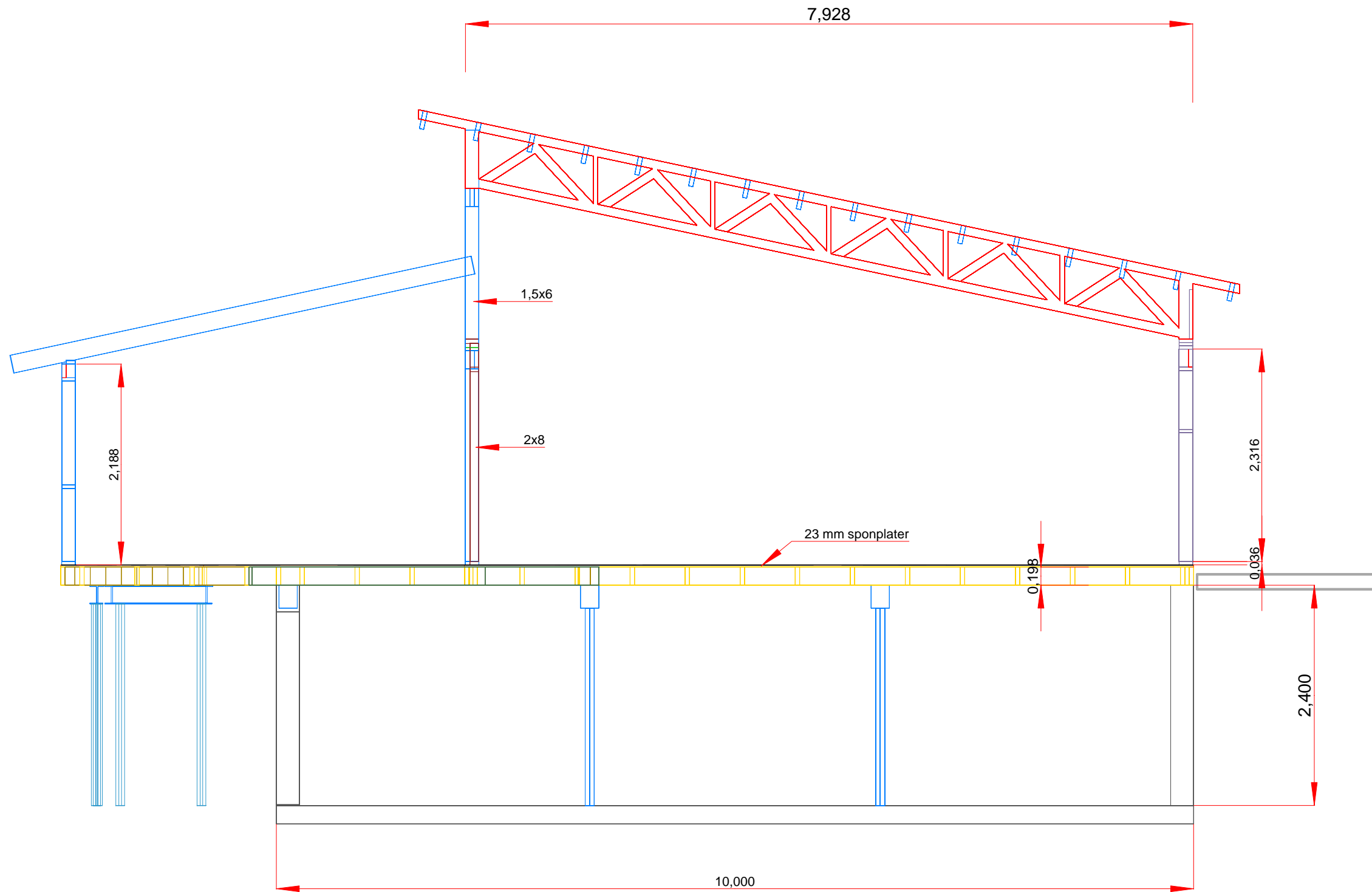


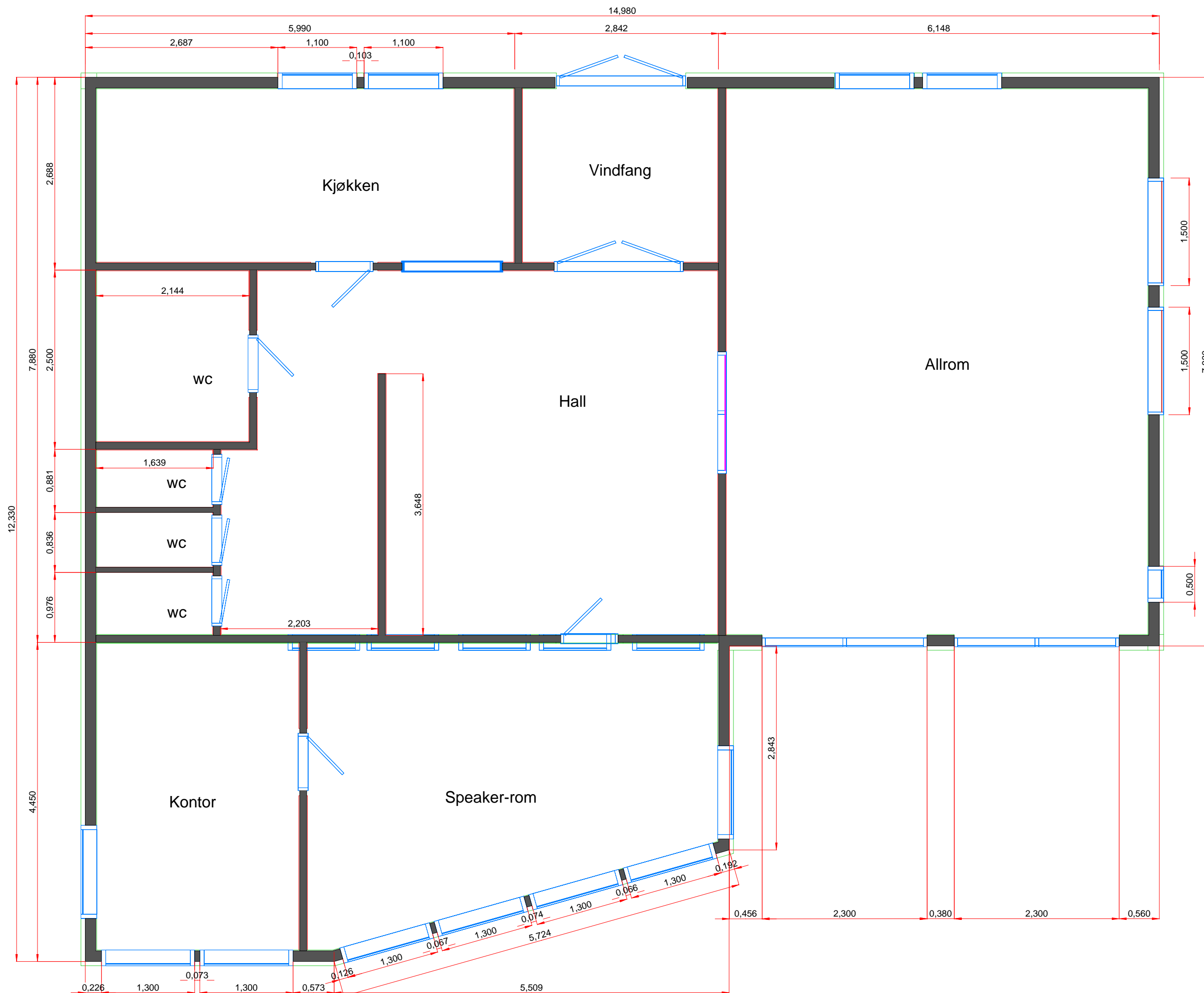
Noen mål på gulvdragerne 2x8"

Målestokk 1:50
 19 juni 2005
 Kai Sannes, Langesund
 Tlf. 35 97 20 94
 www.kaisannes.com







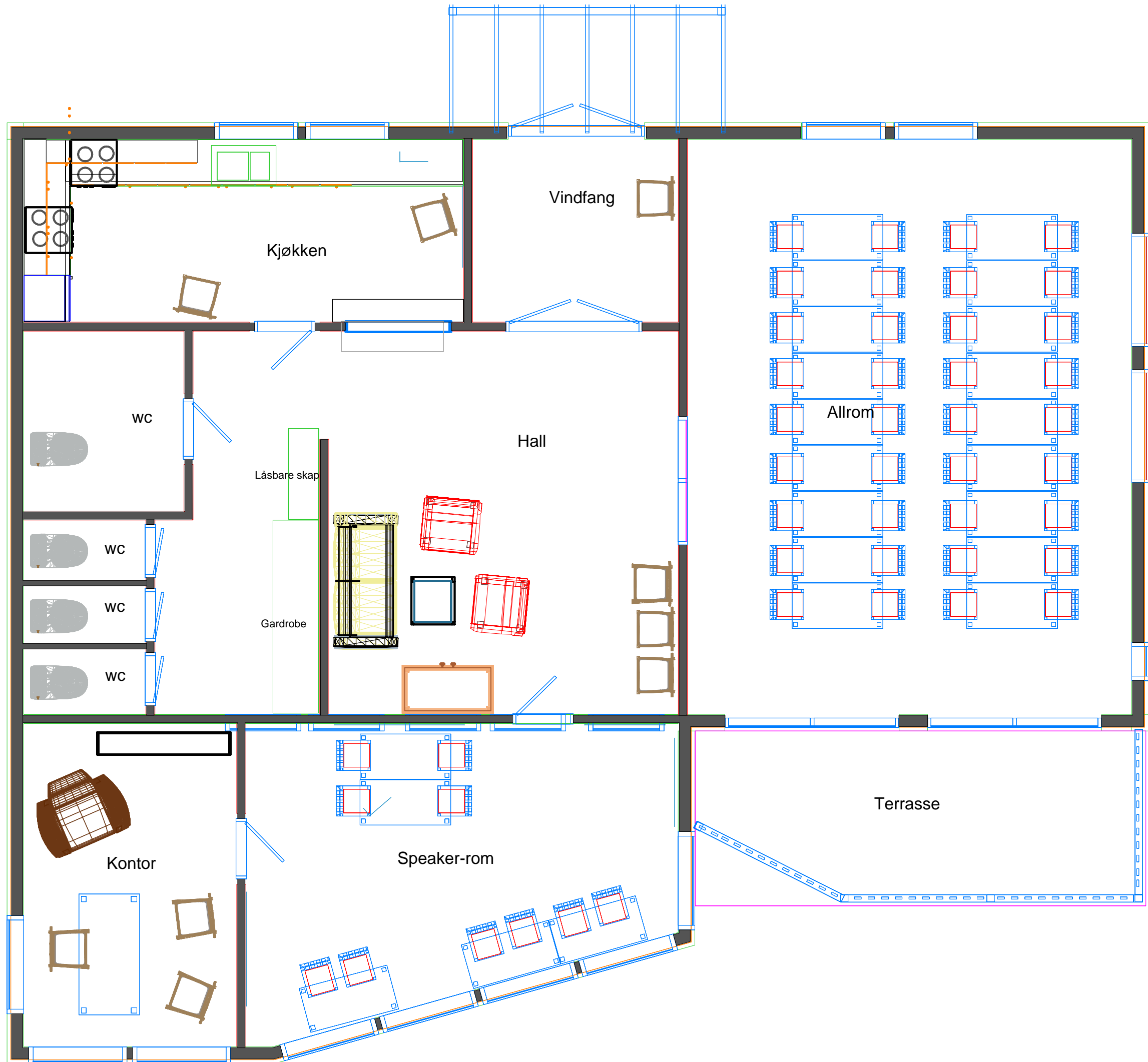


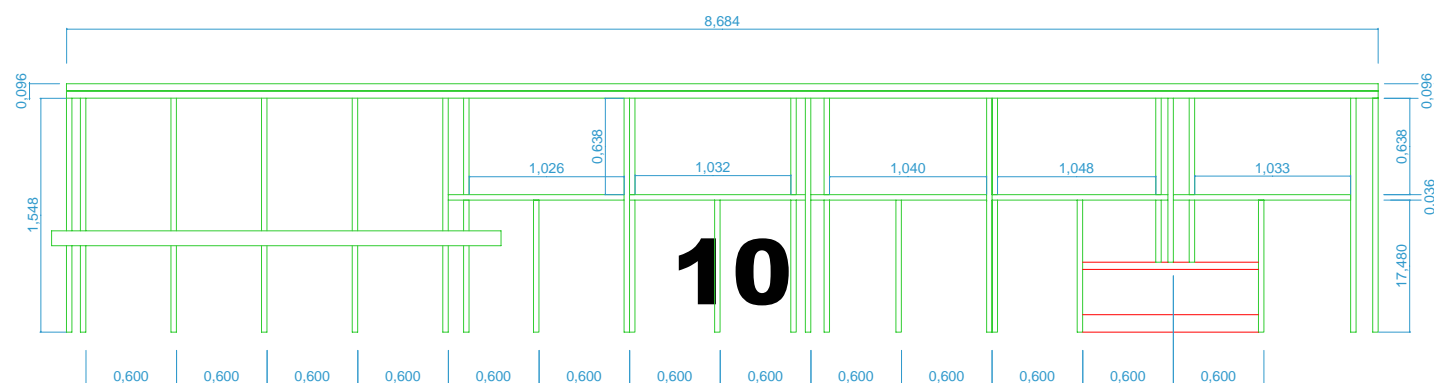
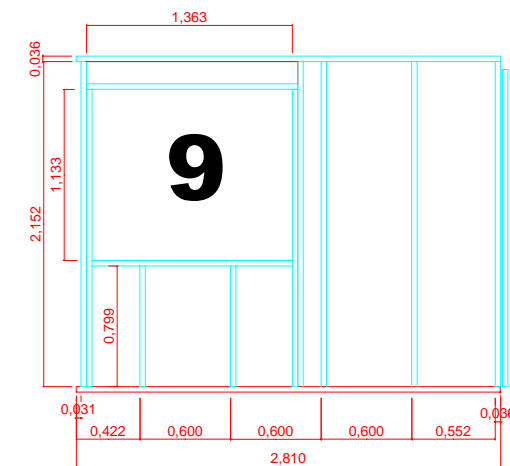
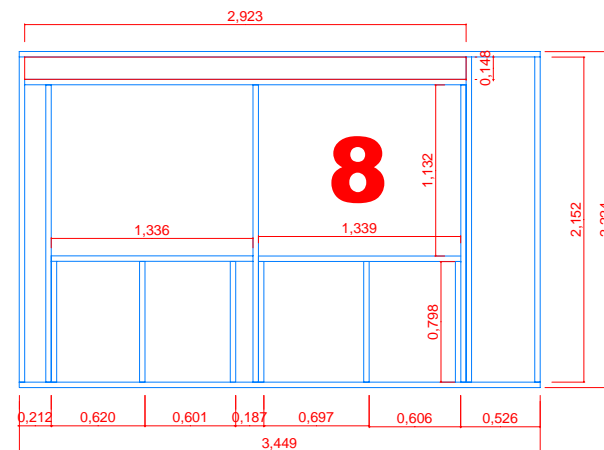
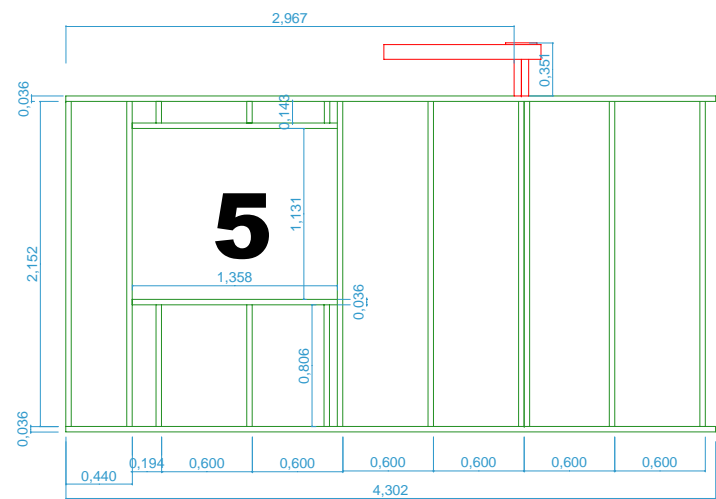
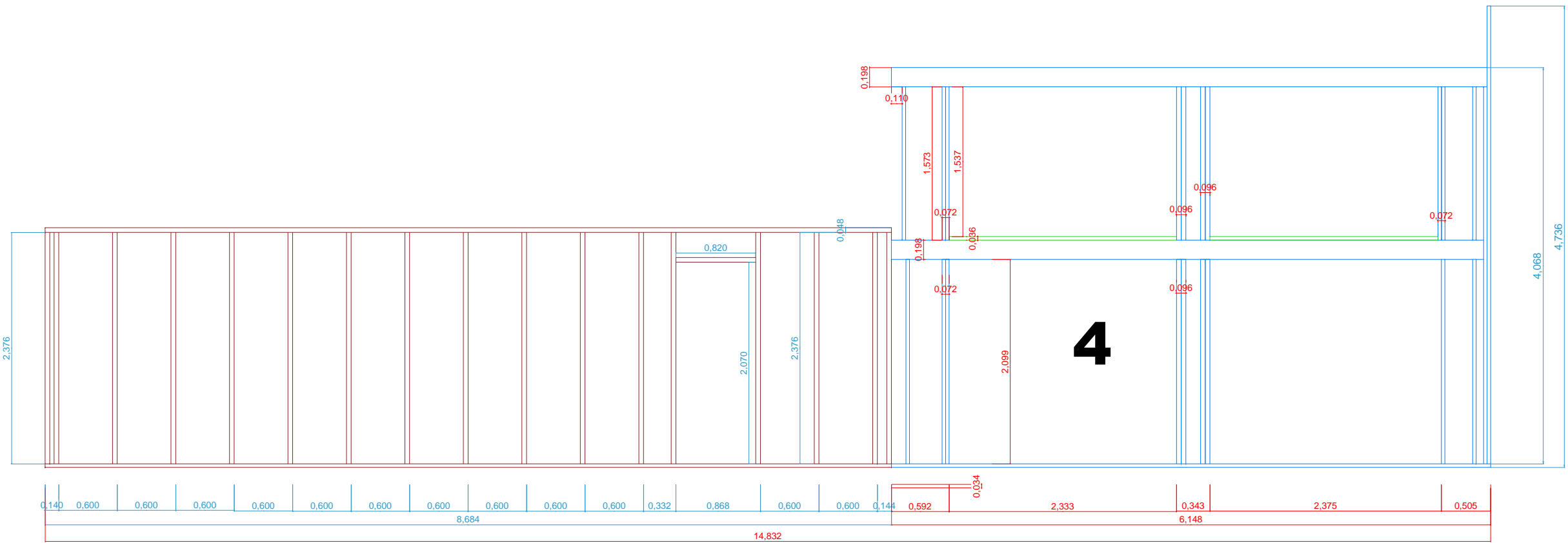
Yttervegger:
 12+(diff) + 148+12+7+36+21+21= 257 mm
 Fra innsiden:
 12 mm gips, sponplater eller panel
 Plast diffusjonssperre.
 (Sjøtene tettes med limbånd.)
 1,5 x 6" (36 x 148mm) stendere,
 1,5 x 6" løsholter for å unngå avbøynh av plater.
 1,5 x 6" (36 x 148mm) bunnsvill.
 1,5 x 6" (36 x 148mm) toppsvill.
 Over vinduer og dører på bærevegger
 legges 2x8" på høykant.
 3 stk toppsviller på østvegg, og 2 på vestvegg.
 Se tegning.
 12 mm asfalt vindtatt.
 sløyfer
 2 x 1,5" (48x36 mm) spikerslag
 (70-80 cm cc i høyde)
 Panel. Eks. tømmermannspanel.

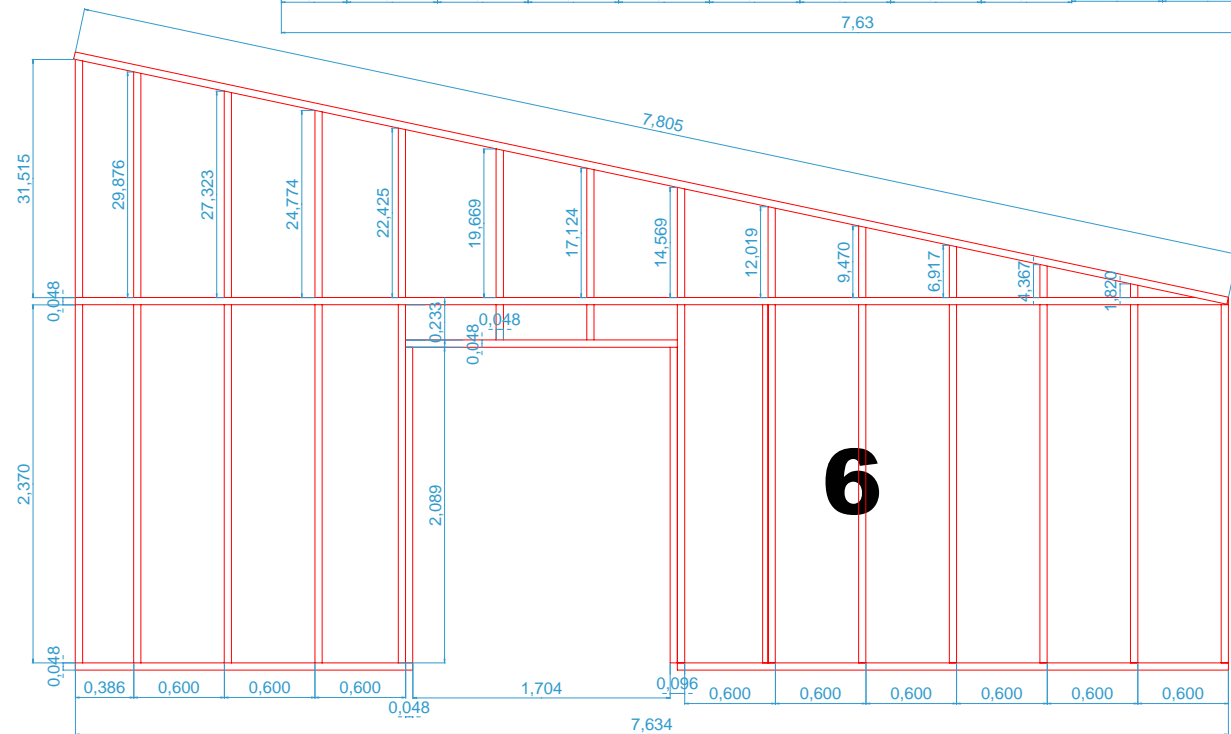
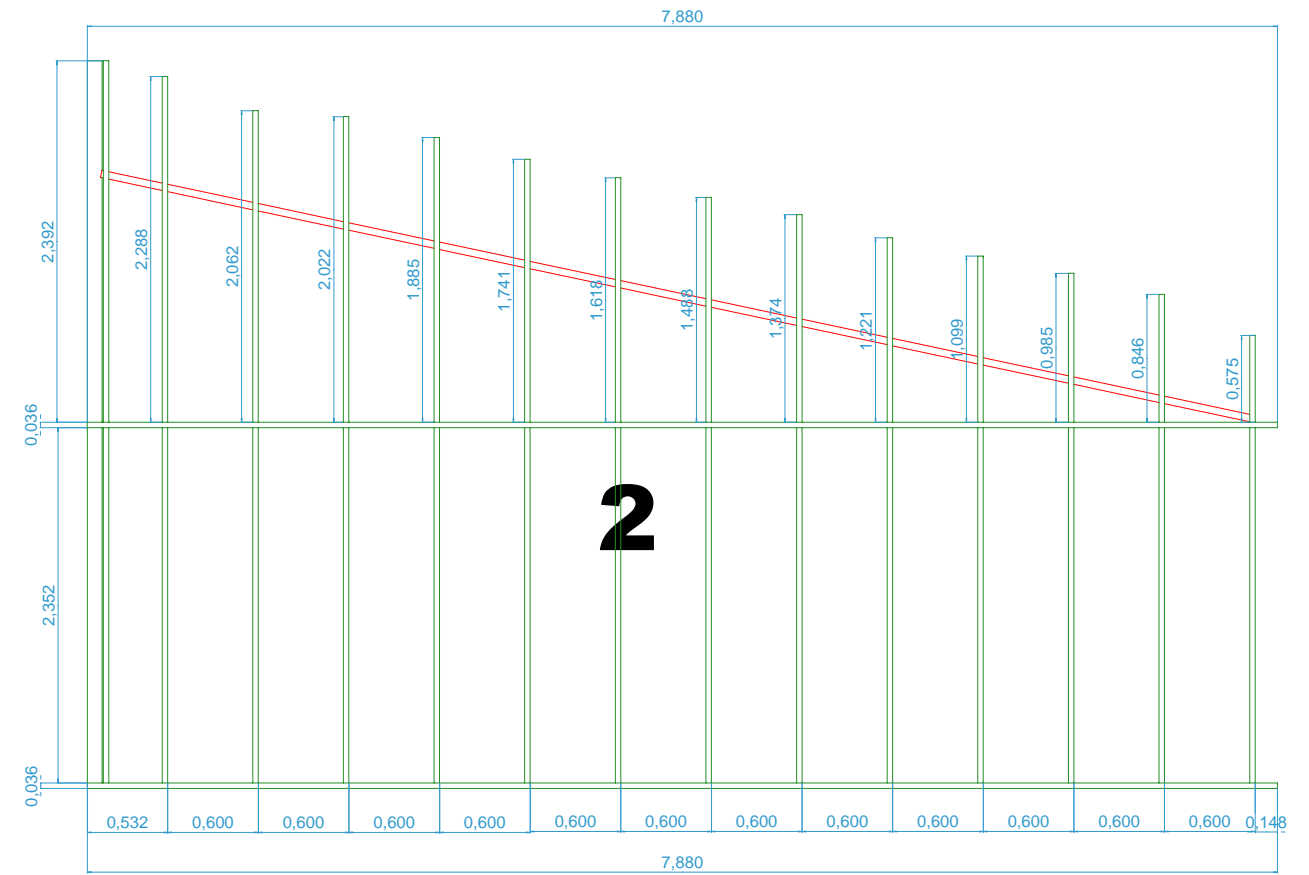
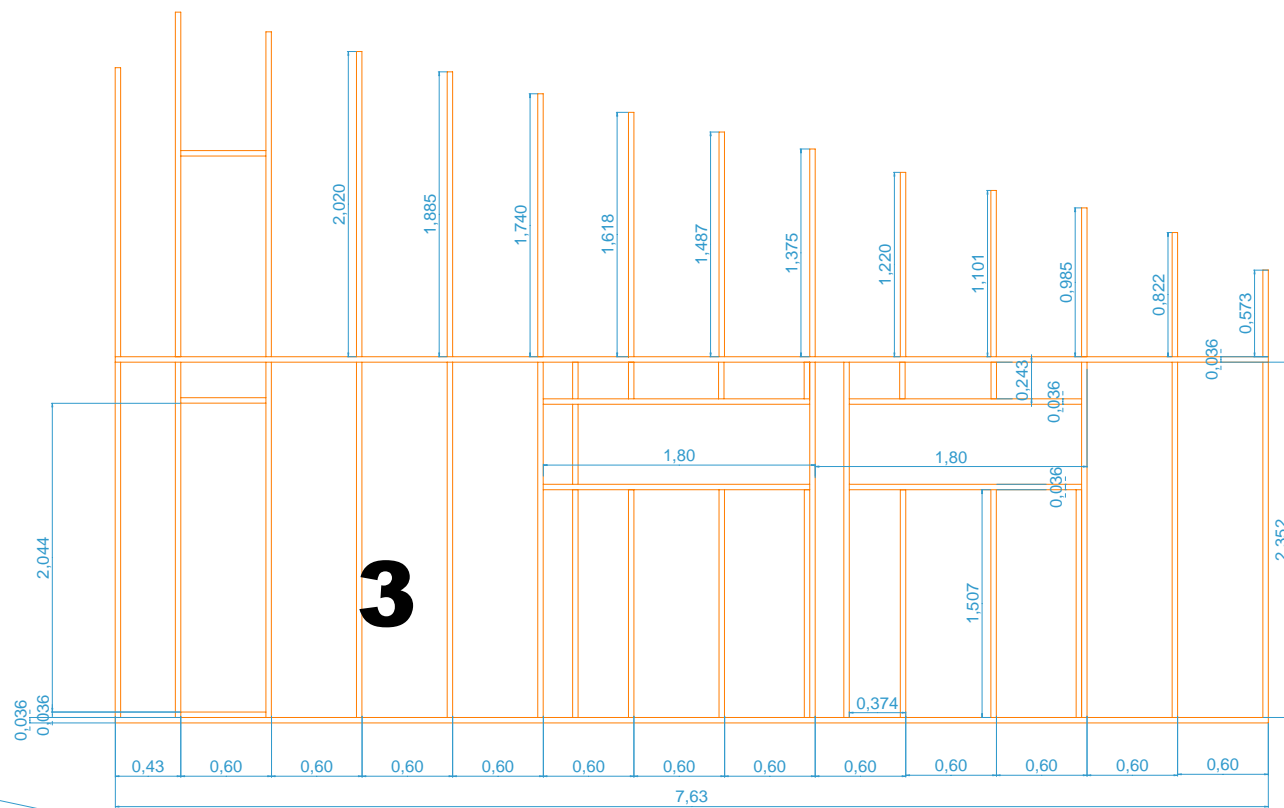
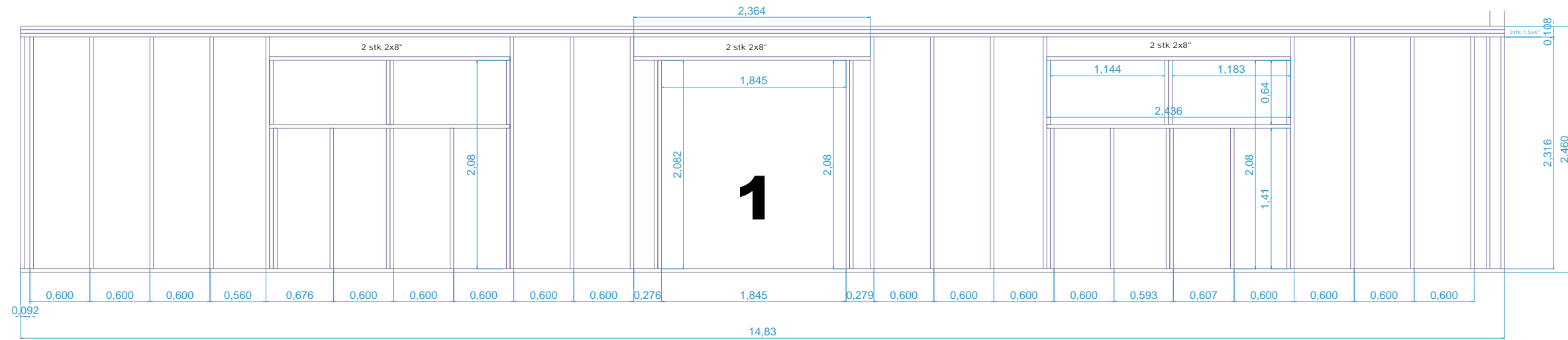
Innevegger:
 2x4" (48x98 mm) reisverk
 Isolasjon 98 mm
 12 mm gips, sponplater eller panel.
 I skillevegg mellom wc'ene kan brukes 3" vegger.

Gulvdragere 2x8" Se målene på egen tegning.
 23 mm spongulv legges direkte på dragere.

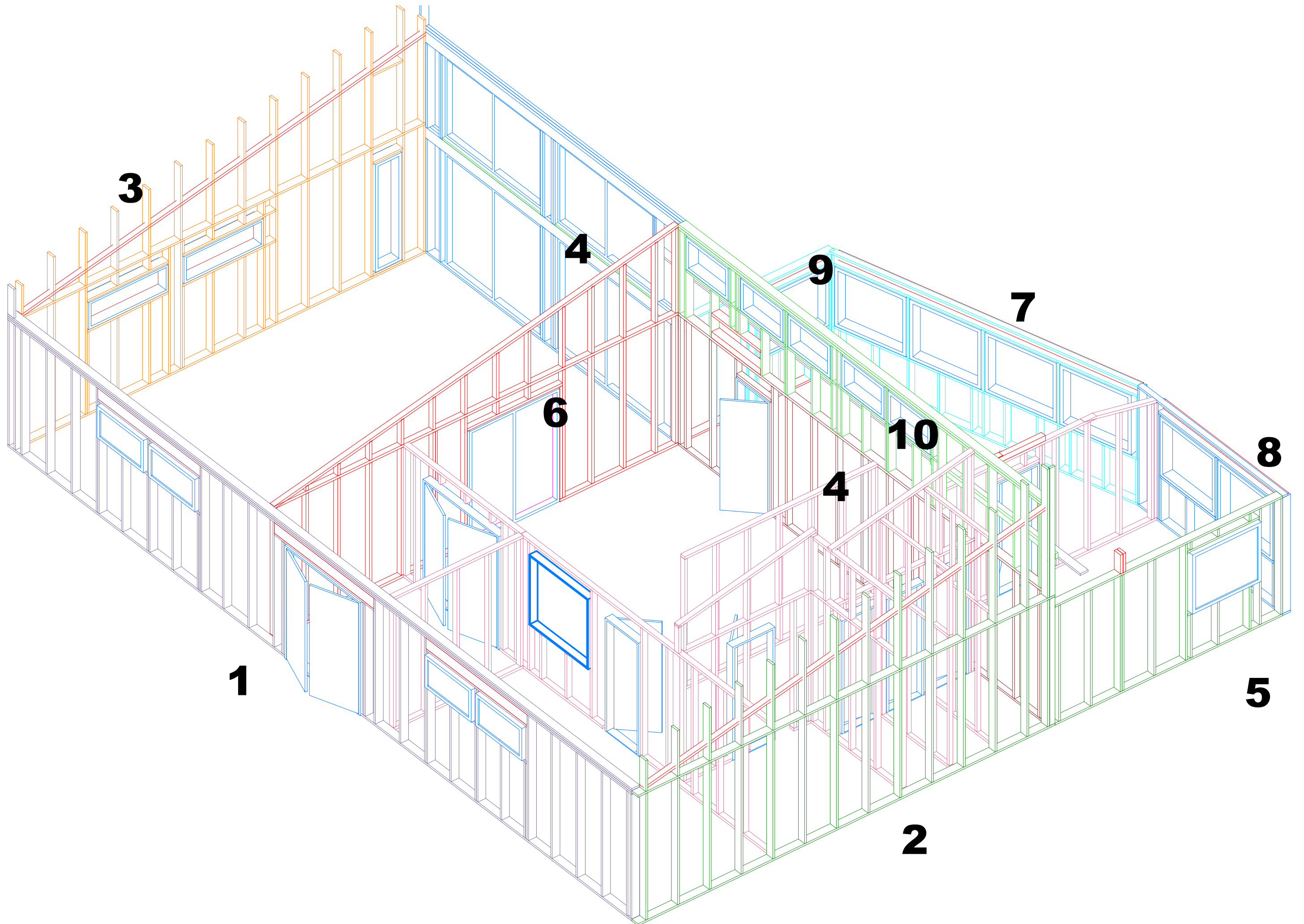
Isolasjon i gulv 20 cm.
 Isolasjon i tak 25 cm.







Målestokk 1:50
 19 juni 2005
 Kai Sannes, Langesund
 Tlf. 35 97 20 94
 www.kaisannes.com



15,000

For LECA.
Undersøk hvor lange veggene kan lages
uten støttemurer innover.

10,000

2,032

0,837

